



Sun Lane

Harpenden, AL5 4ET

Immaculately presented four bedroom family home - arranged over three floors - with a south facing garden and off-street parking for two cars. Moments from the town centre and ideally located for schooling.

Guide price £1,200,000

Sun Lane

Harpenden, AL5 4ET



- Beautifully presented
- Arranged over three floors
- Fantastic open plan Kitchen / Dining Room
- Four Bedrooms
- Two Bathrooms
- South facing garden
- Driveway for two cars
- Central location
- Ideally placed for schooling

Entrance Hall

Living Room

18'2" x 11'1" (5.55 x 3.40)

Kitchen / Dining Room

18'9" x 17'11" (max) (5.72 x 5.48 (max))

Family Room

12'6" x 11'8" (3.82 x 3.57)

Utility Room

7'4" x 6'0" (2.25 x 1.83)

Cloakroom

Bedroom One

18'2" (max) x 9'6" (5.55 (max) x 2.91)

Bedroom Two

11'4" x 10'4" (3.46 x 3.17)

Bedroom Three

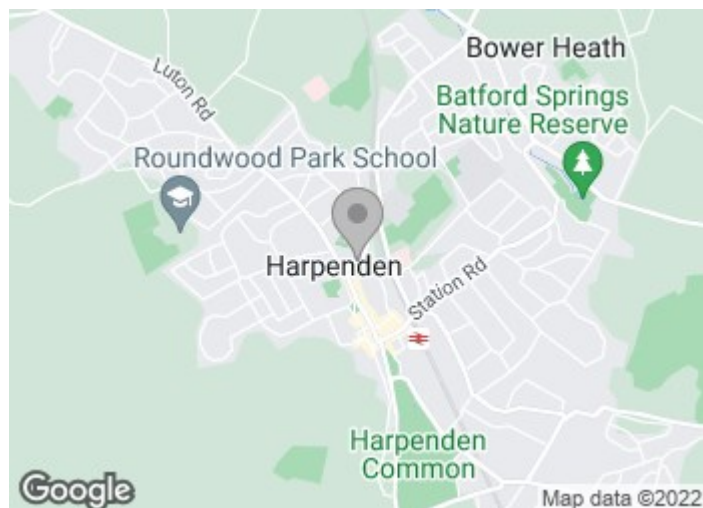
13'3" (max) x 8'5" (4.06 (max) x 2.59)

Shower Room

Bedroom Four

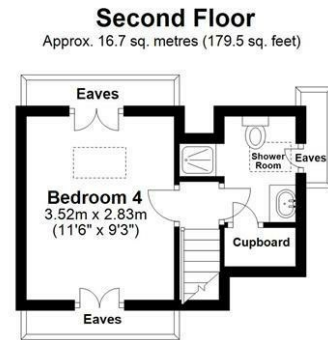
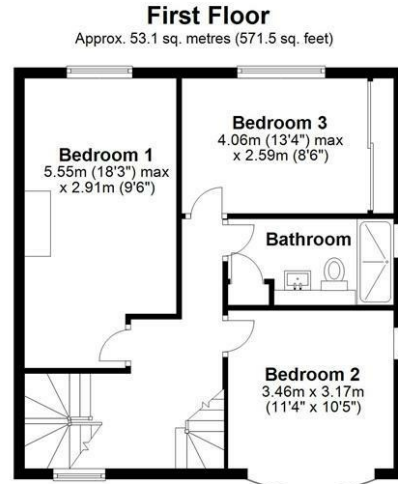
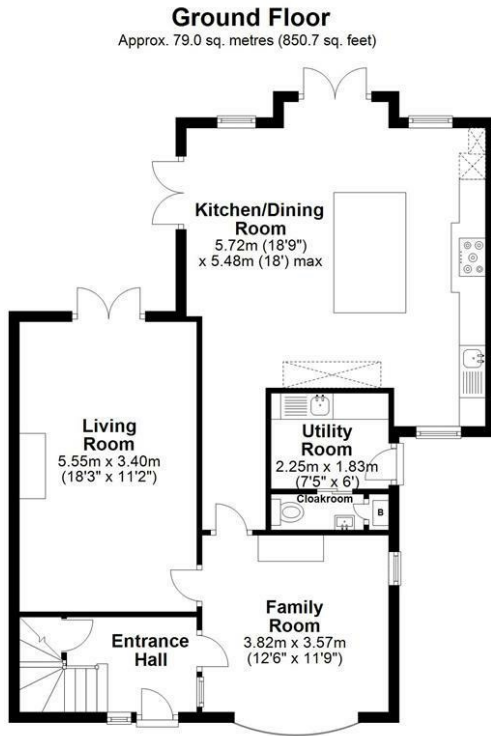
11'6" x 9'3" (3.52 x 2.83)

Shower Room





Floor Plan



Total area: approx. 148.8 sq. metres (1601.6 sq. feet)

Sketch layout only. Not to scale. Plan produced for Whittaker & Co.

Plan produced using PlanUp.

These particulars, whilst believed to be accurate are set out as a general outline only for guidance and do not constitute any part of an offer or contract. Intending purchasers should not rely on them as statements of representation of fact, but must satisfy themselves by inspection or otherwise as to their accuracy. No person in this firm's employment has the authority to make or give any representation or warranty in respect of the property.

